

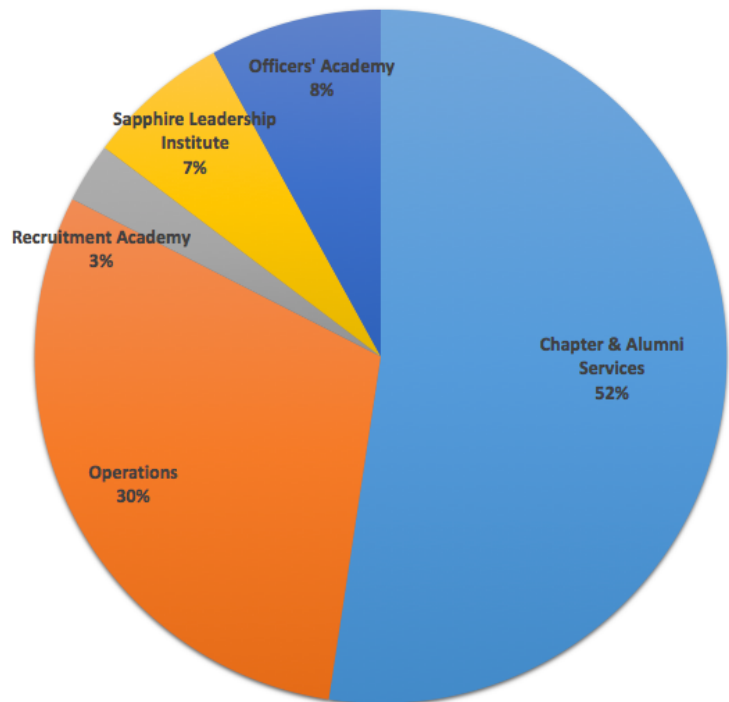
HOW THE NATIONAL FRATERNITY SPENDS YOUR DOLLARS

The collegiate membership dues support the daily operations of the National Fraternity. The fees cover the services to the chapters and colonies provided by the National Office and the various national programs, such as Conclave, Sapphire Leadership Institute, and Officers' Academy.

Chapter & Alumni Services: 52%

Operations: 30%

Specific National Programs: 18%



The National Office provides the following services for Phi Mu Delta members:

- Maintains undergraduate database and rosters for all chapters and colonies
- Answers and relays all official correspondence for the fraternity
- Conducts at least one official chapter/colony visits per year to support undergraduate needs
- Coordinates expansion process for the fraternity and provider's on-campus support of all colonies
- Generates bills and collects dues from chapters
- Develops programming and educates alumni and undergraduates on best-practices models and procedures